

# Membrane Oxygenator



**BRAILE**  
LIFE-SAVING TECHNOLOGIES

**CE**  
2797

The Membrane Oxygenator consists of integrated gas exchange and heat exchange chambers, indicated for cardiopulmonary bypass procedures of up to 6 hours. The gas exchanger contains hydrophobic polypropylene hollow fibers with a highly porous structure, providing efficient oxygen (O<sub>2</sub>) transfer and carbon dioxide (CO<sub>2</sub>) removal. The heat exchanger contains non-porous polyester fibers with high thermal transfer capacity, ensuring effective temperature control while maintaining separation between blood and water.

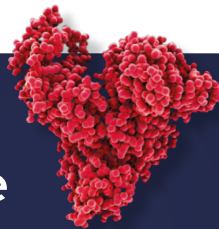
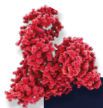
Coated models include the biocompatible BRCoating technology on all blood-contact surfaces, forming a biopassive layer designed to reduce blood interaction with the device.

## Intended Purpose

The Membrane Oxygenator is indicated to add oxygen, remove carbon dioxide and warm/cool the blood during extracorporeal circulation in procedures (CEC) that last up to 6 hours.



| Code   | Description                               | Coating   |
|--------|---|-----------|
| 617313 | Membrane Oxygenator Adult                 | No        |
| 617316 | Membrane Oxygenator Pediatric             | No        |
| 617314 | Membrane Oxygenator Infant                | No        |
| 617315 | Membrane Oxygenator Infant 1500           | No        |
| 617317 | Membrane Oxygenator Newborn 800           | No        |
| 622375 | Membrane Oxygenator Adult BRCoating       | BRCoating |
| 622266 | Membrane Oxygenator Pediatric BRCoating   | BRCoating |
| 622257 | Membrane Oxygenator Infant BRCoating      | BRCoating |
| 622261 | Membrane Oxygenator Infant 1500 BRCoating | BRCoating |
| 622271 | Membrane Oxygenator Newborn 800 BRCoating | BRCoating |



## Product covered with biocompatible BRCoating®

A solution made of recombinant albumin which covers the product's inner surface, reducing its interaction with blood.



# Models



| Membrane Oxygenator  | Adult         | Pediatric     | Infant        | Infant 1500   | Newborn 800   |
|----------------------|---------------|---------------|---------------|---------------|---------------|
| Material             | Polycarbonate | Polycarbonate | Polycarbonate | Polycarbonate | Polycarbonate |
| Max Blood Flow       | 7,0 l/min     | 3,0 l/min     | 2,0 l/min     | 1,5 l/min     | 0,8 l/min     |
| Total Priming Volume | 390 ml        | 280 ml        | 190 ml        | 65 ml         | 43 ml         |

## Gas Exchanger

| Fiber Material            | Polypropylene      | Polypropylene      | Polypropylene      | Polypropylene      | Polypropylene       |
|---------------------------|--------------------|--------------------|--------------------|--------------------|---------------------|
| Effective Membrane Area   | 2,2 m <sup>2</sup> | 1,6 m <sup>2</sup> | 0,7 m <sup>2</sup> | 0,5 m <sup>2</sup> | 0,37 m <sup>2</sup> |
| Temperature Sensor        | YSI                | YSI                | YSI                | YSI                | YSI                 |
| Blood Outflow Connector   | 3/8"               | 3/8"               | 1/4"               | 3/16"              | 3/16"               |
| Gas Inflow Connector      | 1/4"               | 1/4"               | 1/4"               | 1/4"               | 1/4"                |
| Recirculation Connector   | 1/4"               | 1/4"               | 1/4"               | luer lock          | luer lock           |
| Arterial Sample Connector | luer lock          | luer lock          | luer lock          | luer lock          | luer lock           |
| Air Inflow Connector      | luer lock          | luer lock          | luer lock          | luer lock          | luer lock           |

## Heat Exchanger

| Fiber Material                   | Polyester           | Polyester           | Polyester           | Polyester           | Polyester           |
|----------------------------------|---------------------|---------------------|---------------------|---------------------|---------------------|
| Effective Membrane Area          | 0.68 m <sup>2</sup> | 0,35 m <sup>2</sup> | 0,10 m <sup>2</sup> | 0,10 m <sup>2</sup> | 0,05 m <sup>2</sup> |
| Max Water Temperature            | 42°C                | 42°C                | 42°C                | 42°C                | 42°C                |
| Max Water Pressure               | 40 PSI              | 32 PSI              | 32 PSI              | 32 PSI              | 32 PSI              |
| Blood Inflow Connector           | 3/8"                | 3/8"                | 1/4"                | 3/16"               | 3/16"               |
| Water Inflow / Outflow Connector | Hansen (1/2")       | Hansen (1/2")       | Hansen (1/2")       | Hansen (1/2")       | Hansen (1/2")       |

Follow us on social media:

 /brailebiomedica

 @brailebiomedica



**Braile Biomédica Indústria, Comércio e Representações Ltda.**

Av. Pres. Juscelino K. de Oliveira, 1505 | Jardim Tarraf I

CEP 15091-450 | São José do Rio Preto - SP | Brasil

CNPJ: 52.828.936/0001-09

Technical responsible: Vlademir D. A. Ramirez - CRF-SP 09010