

Código Catálogo 619549
Rev. 00 - Fev./2022

HEMOSTATIC SYSTEM

Hemostatic film

Hemostatic valves

AUREUS®

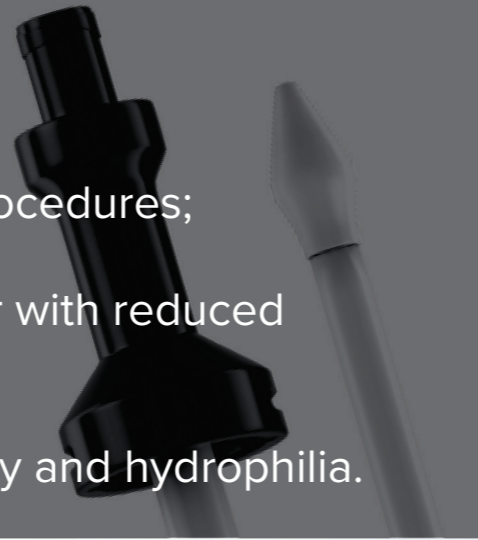
EXPANDABLE INTRODUCER

Braile Biomédica Indústria, Comércio e Representações Ltda.
Av. Pres. Juscelino K. de Oliveira, 1505 - Jardim Tarrá I
CEP 15091-450 - São José do Rio Preto - SP - Brasil
Telefone 17 2136 7000 - Fax 17 2136 7040
Other countries - Phone # (55) 17 2136 7000 - Fax 17 2136 7040
CNPJ: 52.828.936-0001-09
Responsável Técnico: Vladimir D. A. Ramirez - CRF/SP 9010
Registro Anvisa nº 10159030110
www.braile.com.br

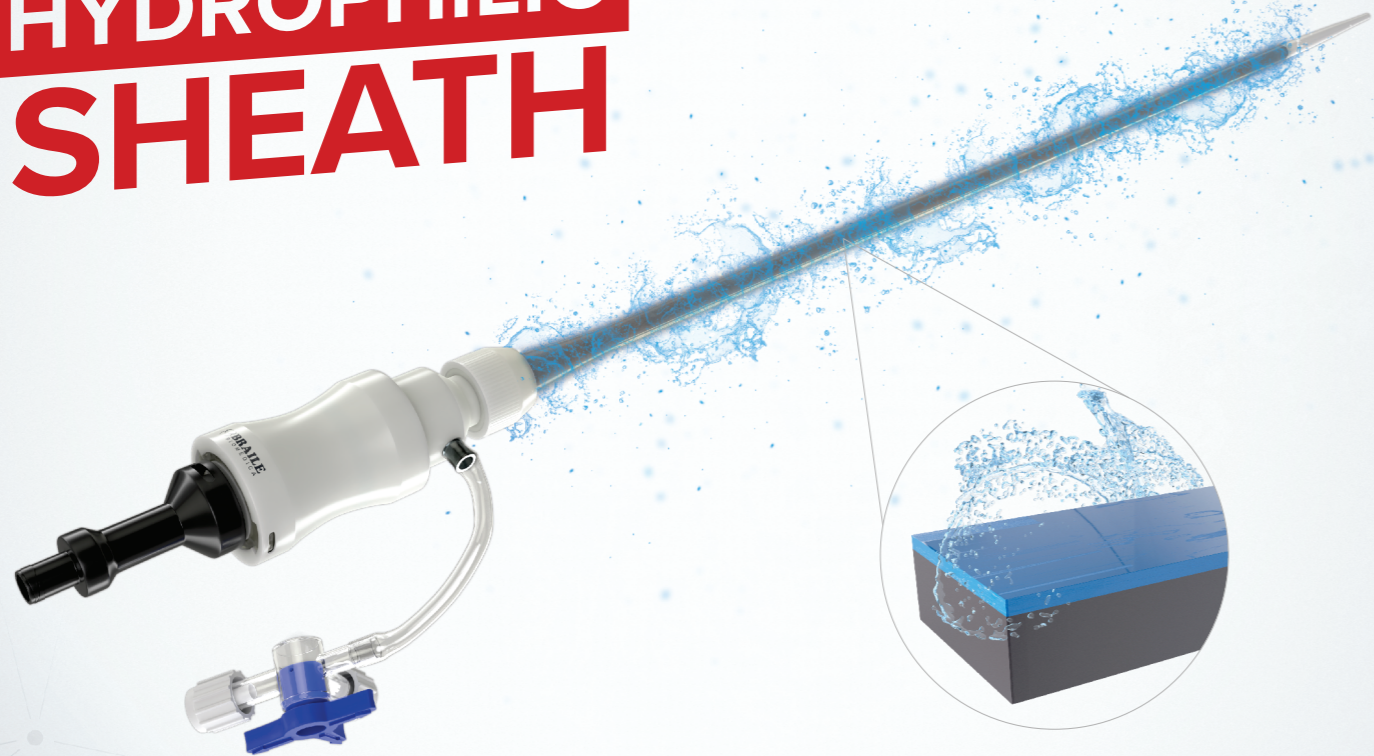
 **BRAILE**
BIOMÉDICA

 **BRAILE**
BIOMÉDICA

- ▶ Profile reduction for any percutaneous endovascular device;
- ▶ Hemostasis solution for endovascular procedures;
- ▶ Easy access for tortuous, calcified and/or with reduced diameter anatomies;
- ▶ Access for angiographies with radiopacity and hydrophilia.



HYDROPHILIC SHEATH



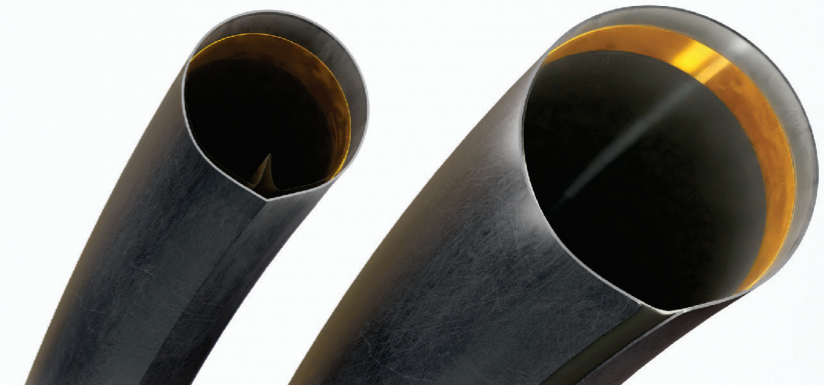
Description: The Aureus® Expandable Introducer consists of a hydrophilic Expandable Sheath, a Dilator to facilitate transfemoral percutaneous vascular access, and an Expander to promote radial expansion of the Expandable Sheath. The Expandable Sheath has radiopacity along its entire length and features a distal radiopaque mark to indicate the termination of the device. The Dilator and Expander have radiopacity throughout their length.

Indication: The Aureus® Expandable Introducer is intended for transfemoral percutaneous vascular access assisted by a guidewire up to 0.035", and once inserted and expanded, provides access and guidance for devices up to 22Fr.

EXPANDABLE UP TO 22 FR

14 Fr

22 Fr



	Short Model	Long Model
Initial Caliber	14 Fr	14 Fr
Final Caliber	22 Fr	22 Fr
Sheath	140 mm	260 mm

Kit composed by:



Hydrophilic Sheath
Initially 14 Frenchs
Expands to 22 Frenchs

Dilator

Expander