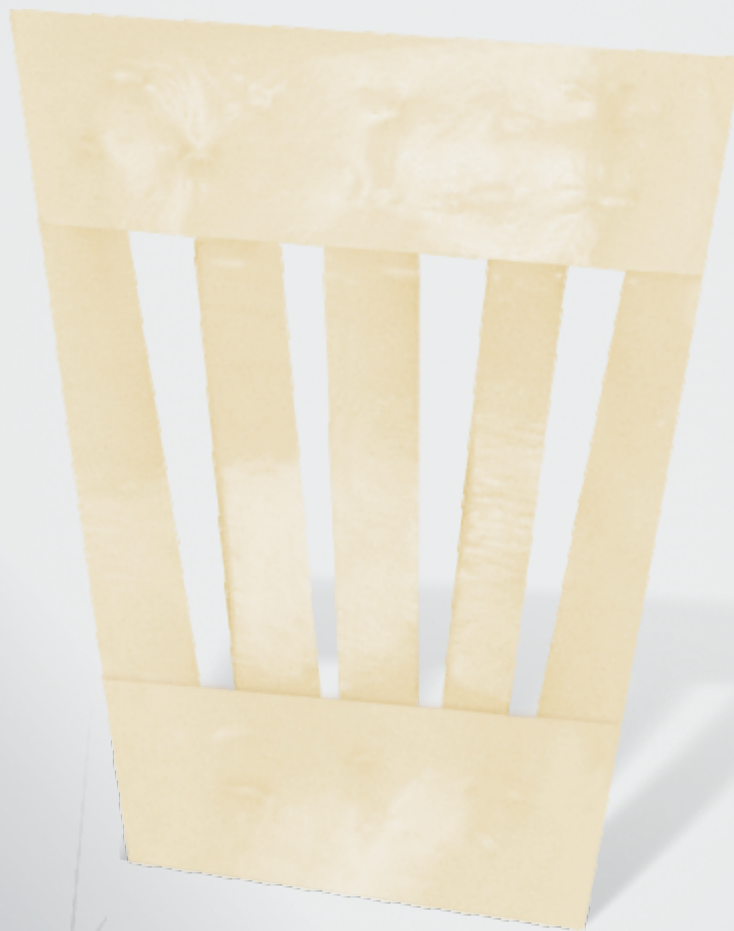


Bovine Pericardium Patch
Braile - Gregori Standardized
Bovine Pericardium Prosthesis



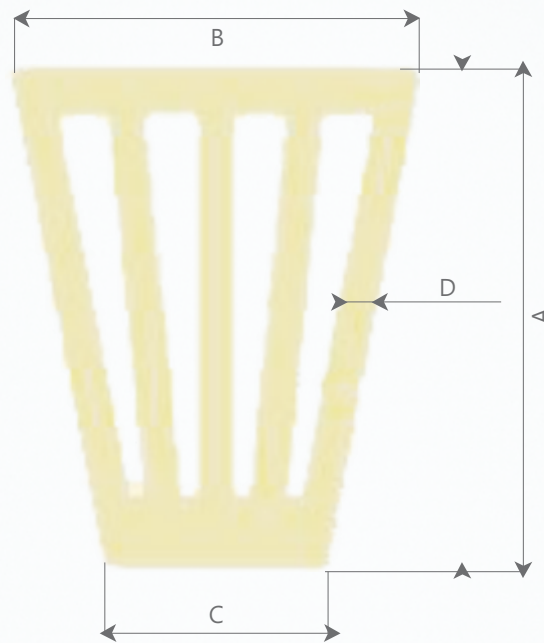
Experience
Quality
Performance

Description:

The Bovine Pericardium Patch Braile - Gregori Standardized Bovine Pericardium Prosthesis is made in a single block, with single parallel strips of chemically treated bovine pericardium, fixed in top and bottom beams. These beams are reinforced with bovine pericardium, sutured with separate stitches, enabling the reduction of the number of chordae, if necessary.

Indication:

The Bovine Pericardium Patch Braile - Gregori Standardized Bovine Pericardium Prosthesis is indicated for the replacement of tendinae chordae of the atrio-ventricular valves (mitral and tricuspid).



Size	A ± 0,5	B ± 0,2	C ± 0,2	D ± 0,2	Number of strips	Code
20	20	16,3	8,7	1,5	5	231402
25	25	20,0	10,7	1,5	6	231411
30	30	23,7	12,7	1,5	7	231420
35	35	27,4	14,6	1,5	8	231439
40	40	31,0	16,6	1,5	9	248369