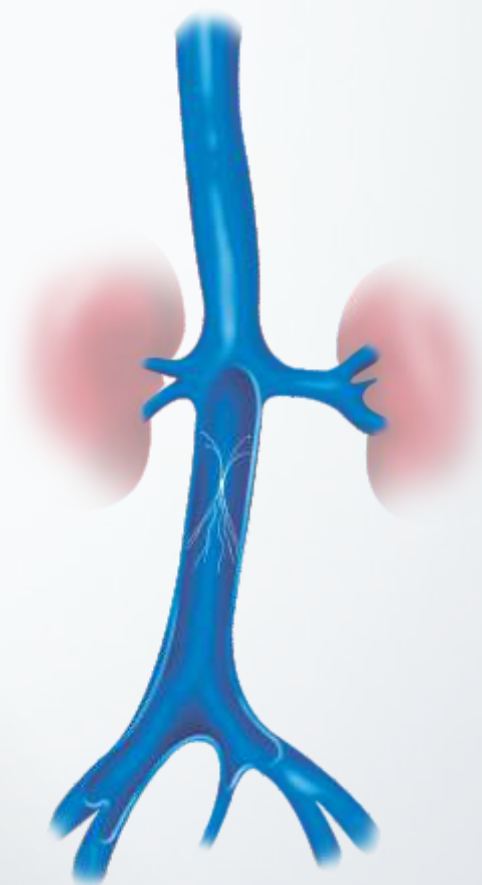
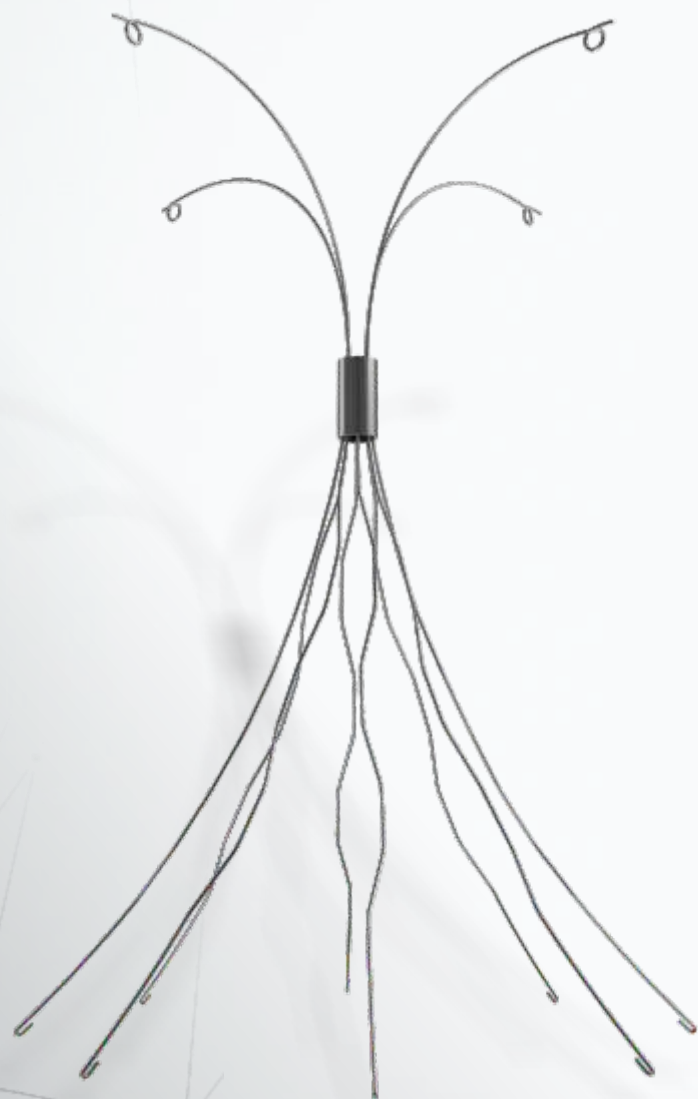
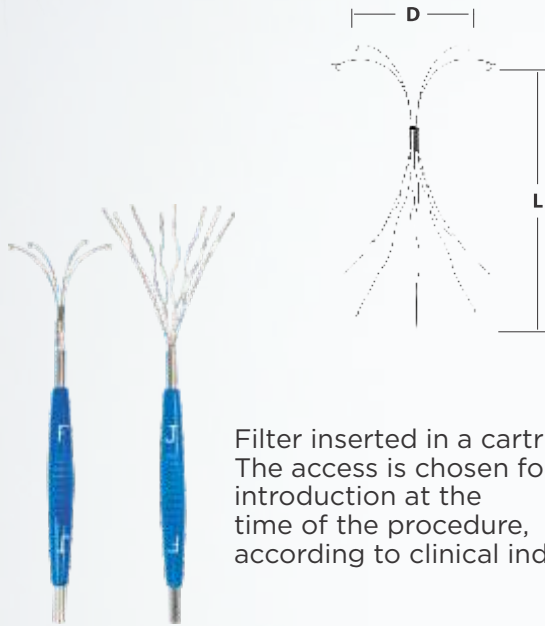


VENA CAVA FILTER

FILTER FOR THE INFERIOR VENA CAVA WITH AND INTRODUCING SYSTEM



Permanent Filter in stainless steel.
 Femoral or jugular access decided during the procedure.
 Low profile, 7Fr.
 Self-centering, with as a feand controlled release.
 High efficiency of thrombus blocking.
 Excellent radiopaque visualization.





Filter inserted in a cartridge.
 The access is chosen for introduction at the time of the procedure, according to clinical indication.

SHORT FILTER	
For inferior vena cava with a diameter varying between 18mm and 28mm	
CAVA DIAMETER (MM)	FILTER LENGTH (MM)
18	56.3
20	54.1
22	52.7
24	51.6
26	50.5
28	50.1

LONG FILTER	
For inferior vena cava with a diameter varying between 28mm and 35mm	
CAVA DIAMETER (MM)	FILTER LENGTH (MM)
28	74.1
30	72.7
32	71.5
34	70.3
35	70.0

* Ask regarding availability of other measurements.

IMPLANT INTRODUCED BY DISPLACEMENT INSIDE THE SHEATH

- 1 Sheath tip with a dilator and guide wire

- 2 Femoral side cartridge inserted in the valve


- 3 Displacement rod indicating transfer

- 4 Transferred filter ready for release

- 5 Start of femoral side release